



HUNTERDON HILLS PLAZA



Lebanon, New Jersey

---

[baldoniproperties.com](http://baldoniproperties.com)

## About The Complex

---

Hunterdon Hills Plaza is an Office, Retail, and Medical Complex located in Lebanon, NJ. We are directly on US Highway Route 22 and minutes away from Routes 78, 287, & 31. Our commercial complex is home to a diverse mix of businesses. We are home to 7 medical practices, 3 restaurants, Bright Horizons Daycare, Hertz Rental Car, the State of New Jersey, and 9 additional professional service tenants.

## Tenant Experience

---

Many of our tenants have found Hunterdon Hills Plaza to be the perfect place to start or expand a business in Hunterdon County. The mix of tenants that complement each other and the onsite property management are just two reasons why current tenants find Hunterdon Hills Plaza to be a great place for their business.

## Our Location

---

Hunterdon Hills Plaza is an 8.6 acre site with great highway exposure, professionally landscaped grounds, and ample parking with over 250 parking spots. Each of our 4 buildings is uniquely designed to accommodate an assorted mix of tenants, ranging from medical to retail to professional service. All are also ADA accessible.



# Our Current Tenants

## MEDICAL

Advanced Obstetrics & Gynecology  
Center for Natural Health  
Dr. Howard Tzorfias, Podiatrist  
Hunterdon Family Dental Care  
Lou PT  
ProCare Rehabilitation  
Somerset Hills Endodontics  
Somerset Pediatric Group

## RETAIL / SERVICE

Bright Horizons  
Easton Electric Bikes  
Hertz Car Rental  
JoeBri Nails & Spa  
Indigo Collective Hair Salon

## OFFICE

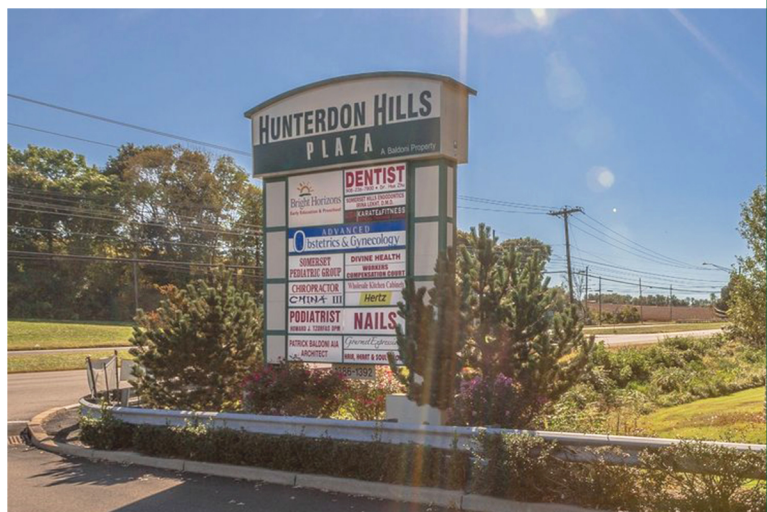
CBSPD, Inc.  
Garden State Trust Company  
Maurio Associates  
PAB Architects, LLC  
State of New Jersey Workers  
Compensation  
The Swan Group  
U.S. Advisory, LLC

## RESTAURANTS

China III  
Galasso's Cucina Italiana  
La Mila Catering & Events



1386-1392 Route 22 West  
Lebanon, NJ 08833

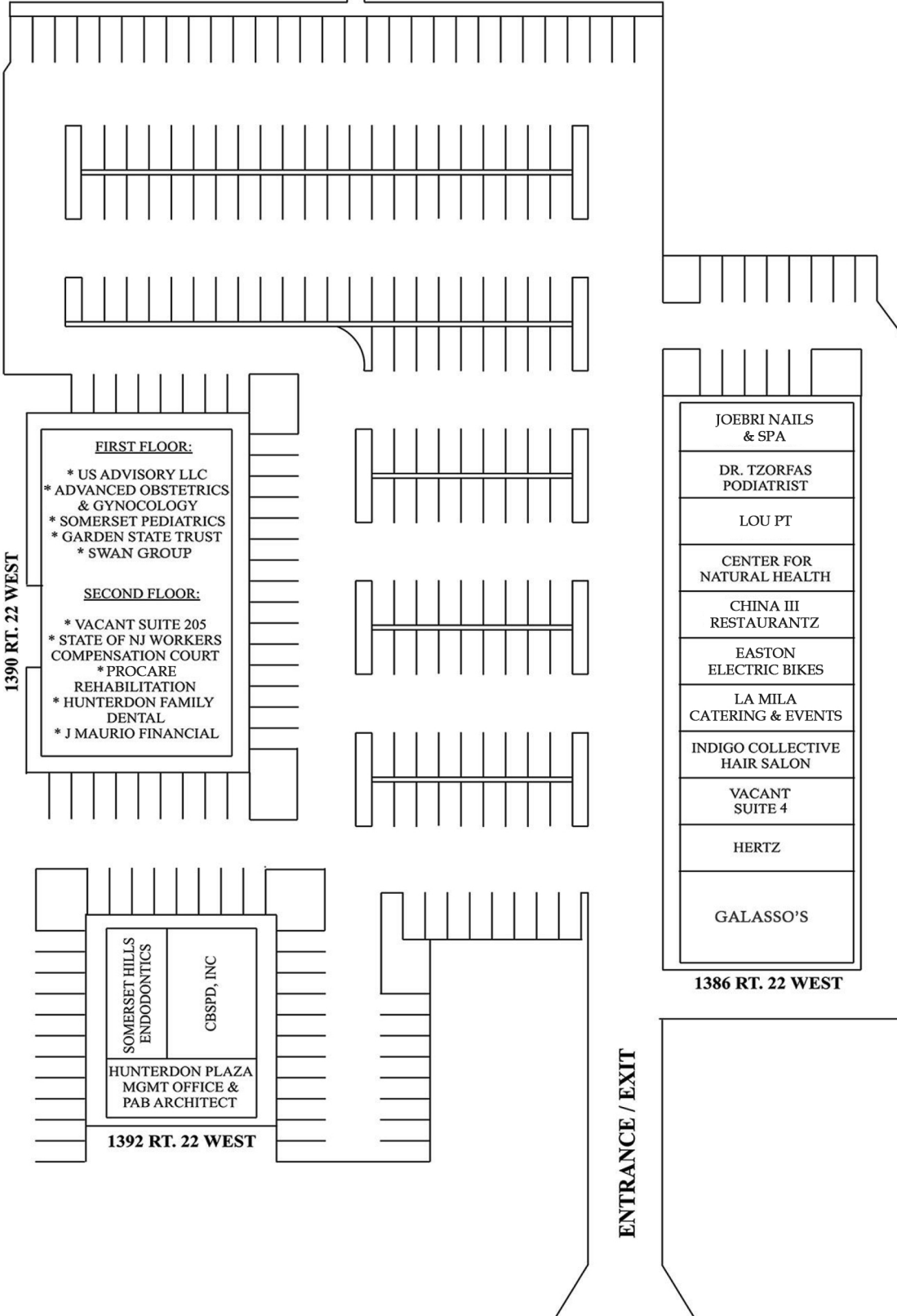


1388 RT. 22 WEST

BRIGHT HORIZONS  
DAY CARE

# HUNTERDON HILLS PLAZA LEBANON, NJ 08833

WWW.BALDONIPROPERTIES.COM



**FIRST FLOOR:**

- \* US ADVISORY LLC
- \* ADVANCED OBSTETRICS & GYNOCOLGY
- \* SOMERSET PEDIATRICS
- \* GARDEN STATE TRUST
- \* SWAN GROUP

**SECOND FLOOR:**

- \* VACANT SUITE 205
- \* STATE OF NJ WORKERS COMPENSATION COURT
- \* PROCARE REHABILITATION
- \* HUNTERDON FAMILY DENTAL
- \* J MAURIO FINANCIAL

JOEBRI NAILS & SPA

DR. TZORFAS  
PODIATRIST

LOU PT

CENTER FOR  
NATURAL HEALTH

CHINA III  
RESTAURANTZ

EASTON  
ELECTRIC BIKES

LA MILA  
CATERING & EVENTS

INDIGO COLLECTIVE  
HAIR SALON

VACANT  
SUITE 4

HERTZ

GALASSO'S

1386 RT. 22 WEST

1390 RT. 22 WEST

1392 RT. 22 WEST

SOMERSET HILLS  
ENDODONTICS

CBSFD, INC

HUNTERDON PLAZA  
MGMT OFFICE &  
PAB ARCHITECT

ENTRANCE / EXIT

## What Our Tenants Are Saying

---

"For over 10 years Hunterdon Hills Plaza has provided a convenient, safe place for our employees and patients. It's reassuring to know that we can always count on Baldoni Properties to take care of any of our building needs in a professional and timely manner."

### ***Somerset Pediatric Group***

"I started my dental office at Hunterdon Hills Plaza 7 years ago. I am glad to have a very responsible landlord in Patrick Baldoni. I am happy to be here, as Hunterdon Hills Plaza really provides me the peace of mind to run my business."

Dr. Zhu, Owner

### ***Hunterdon Family Dental Care***

"We've been tenants of Hunterdon Hills Plaza since July 2000 and have had a very favorable experience working with Pat Baldoni and Hunterdon Plaza Associates. We are especially thankful that the property is maintained very well, and Pat is readily available and quick to address issues as they arise."

Amy Rubin, Business Manager

### ***Advanced Obstetrics and Gynecology, LLC***

## Space Available - Suite 4

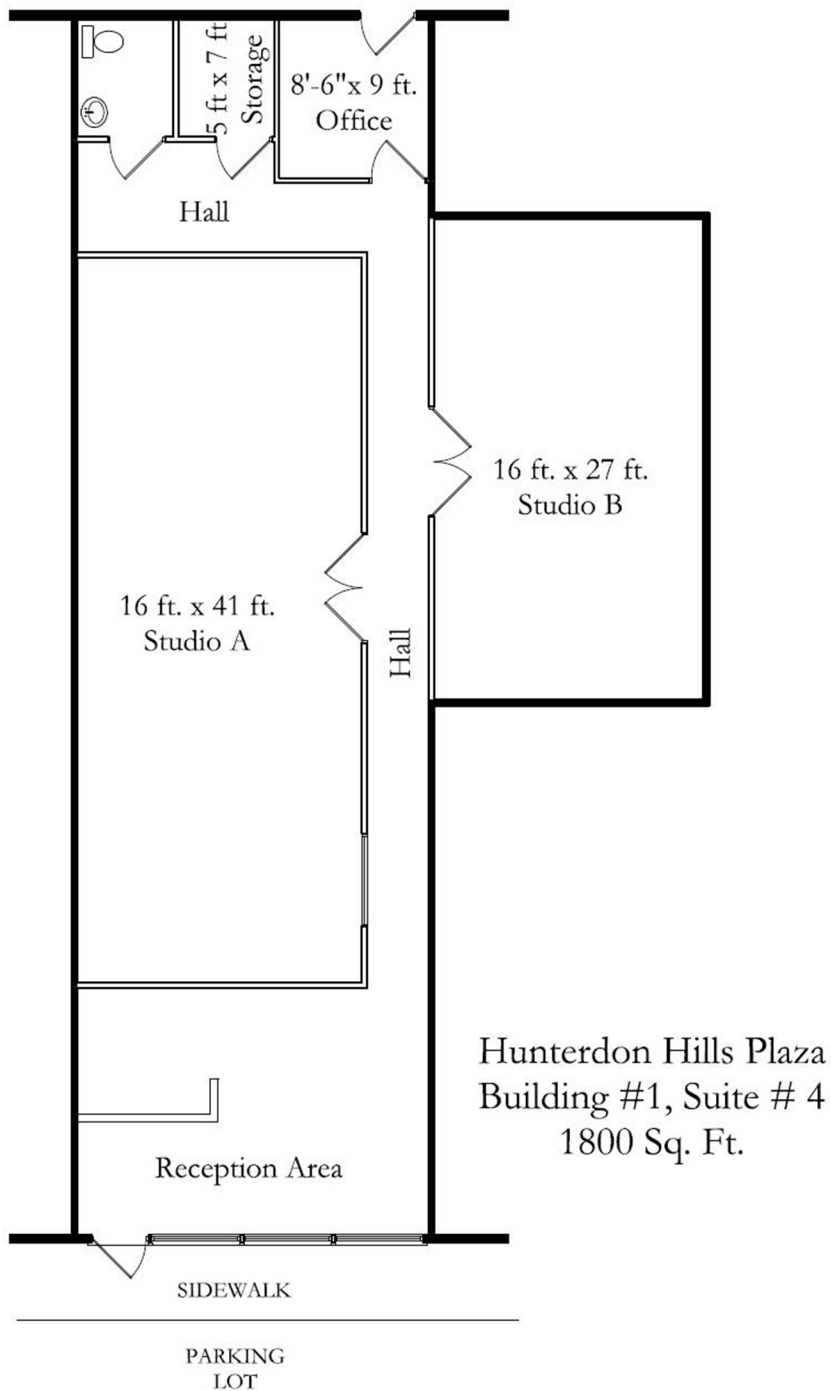
**Location:** Building 1 (Strip Mall)

**Area:** 1,800 SF

**Floor:** 1st

**Use:** Retail

**Note:** Has two separate fitness studios.



# Space Available - Suite 205

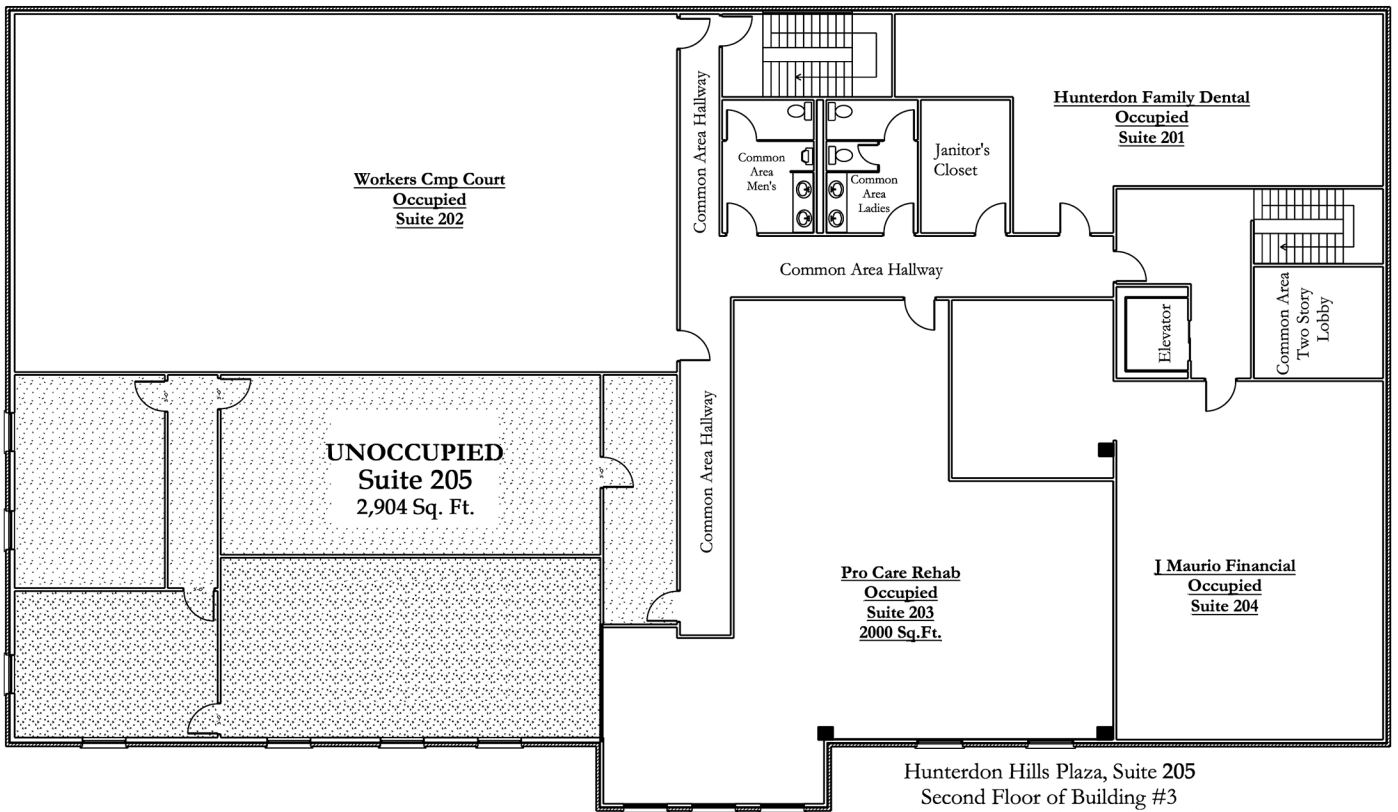
**Location:** Building 3 (Two Story Building)

**Area:** 2,904 SF

**Floor:** 2nd

**Use:** Office

**Note:** Accessible through recently updated lobby with elevator.



Hunterdon Hills Plaza, Suite 205  
Second Floor of Building #3  
1390 US Highway 22, Lebanon, NJ 08833



# What's happening at Hunterdon Hills Plaza?

Follow us on Facebook & Instagram  
*@hunterdonhillsplaza*



[www.baldoniproperties.com](http://www.baldoniproperties.com)  
908-236-9969

1386-1392 Route 22 West  
Lebanon, NJ 08833